

Accessibility

Bedruthan's site is sloping, however, we do our best to cater for our guests with disabilities. Please inform our team if you have any special requirements and we will be happy to assist you. Our lift serves the main hotel bedrooms and a ground floor disabled suite. Villas and apartments are not accessible solely by using the lift.

Dining

Breakfast is served from 7.30am – 9.45am and lunch (for an additional charge) is served in Café Indigo from 12pm – 2pm.

For little ones there are children's teas served between 4.30pm – 6pm but if you would like to bring your children to dinner with you there is a family dining option served from 7pm. Reservations for family dining must be made in advance.

Evening dinner is served from 7.30pm – 9pm and is a time for adults to relax and unwind together. Whilst we have no dress code as such, most guests do relish the chance to dress up a little for dinner.

We cater for all special diets and food allergies so please inform us when making your reservation.

Finding Bedruthan

Please refer to our website for a detailed description of how to find us.

Leisure Facilities

The following are available for guests to use during their stay. Please see our website for current opening hours:

Indoor Pool (13m x 7m)
Gym
2 Tennis Courts

Surf Coach available at an additional cost
Wetsuit, surfboard and bodyboard hire available at an additional cost
The Space – our sophisticated adult games lounge
Snooker Room
2 outdoor pools and a hot tub
Indoor and Outdoor play areas
Adults lounge
Spa

Ocean Spa

Bedruthan's Ocean Spa offers adult guests use of a spa pool, caldarium, sauna, steam room and Hammam. We also offer a wide range of unique treatments and rituals which are available 7 days a week. Please view the full treatment list on our website and contact the Ocean Spa team on 01637 861219 to make your reservation. We strongly recommend booking in advance.

For Children

All year round Bedruthan's children's clubs are open daily. There is a family games room open to all for fun and crafts. During school holidays, the clubs are also open to all age groups in the evening. Clubs are charged per session at a rate dependent on age of children. Please refer to the website for more information.

Babysitters can be arranged for the afternoon and evening; this must be pre-booked through the children's department. We also have a Baby Monitor system linked to every bedroom which is available between 7pm – 11.30pm every evening.

Outside, younger children have so much to discover. Captaining trawlers, excavating with miniature JCB's, climbing the pirate ship and jumping until they drop on the trampoline. Older children have a challenging assault course, with a

Flying Fox and Burma Bridge, and a host of other activities from food foraging to treasure hunts and craft workshops. Teens can hang out in the Teenage Room or challenge their friends to a game of pool.

Inside the hotel there are helicopters, fire engines and trains to ride, and Jungle Tumble. With brightly coloured ball pools, slides, jumps and ropes Jungle Tumble is a haven for children of all ages. The very young have space to explore in the soft play area. Most of the year early evenings for children are filled with shows and visits from local entertainers so there is something to do anytime of day.

Win a Holiday

Do you know someone who would enjoy staying here?

Simply send us five names and addresses of friends who have not stayed at Bedruthan before and if any of them book a 3 night break or more at Bedruthan in 2010 we will give you with a free bottle of champagne the next time you visit us. We will also enter your name into a draw to win a week's holiday at Bedruthan (terms will apply).

Send your names and addresses to stay@bedruthan.com clearly marking your email with 'Recommended Friends' or send by post.

Terms & Conditions

Reservations

"Bedruthan Steps Hotel" is the trading name of Bedruthan Steps Hotel Limited ("the Hotel"). All rooms are offered by the Hotel subject to them being available on receipt of deposit. Verbal quotations are not binding unless confirmed in writing by the Hotel.

Payment of Accounts

Settlement of your account must be made on arrival.

Accounts can be settled in cash, by cheque or by MASTERCARD, VISA, DELTA or SWITCH card. Cheques are only accepted by prior arrangement before arrival. Credit cards are authorised on arrival. No allowance is made for meals missed or rooms not occupied for the full time of the reservation.

Charges and Supply of Services

Whilst the hotel brochure is intended to give a fair representation of the facilities available, there may be occasions when certain facilities are out of use. Although all reasonable endeavours will be made to try and ensure that this does not happen, where facilities are unavailable no liability shall attach to the Hotel by reason thereof.

If you require further information about any particular facilities or their availability please write well in advance of your holiday so that your queries can be dealt with. The Hotel cannot accept responsibility for anything said to you by our staff outside the information given in the brochure and tariff unless it is confirmed in writing.

All information given in the hotel brochure and tariff is correct at the time of going to press but services, facilities and charges may be changed during the validity of the brochure. If no charges are specified upon booking or additional and varied services are provided then you will be required to pay for these services at the prevailing rate on the day on which these services are provided. The Hotel management reserves the right to change the entertainment programme without prior notice.

Participation in any of the Hotel's organised sports competitions, games or other activities is at the guests' own risk.

Guest Information

Access to the beach for pushchairs and disabled persons is possible but not via the coastal path in front of the hotel. Bedruthan has many steps and is unsuitable for people who find them difficult.

All valuables should be left in the hotel safe.

Please bring your own beach towels.

Guests may bring visitors into Bedruthan by prior arrangement with management only, charges and restrictions apply. Guests are responsible for the behaviour of their visitors and must ensure that no nuisance is caused to either the Hotel or its other guests. All such visitors enter the hotel premises at their own risk.

Bedruthan has a non-smoking policy and reception staff will be able to show you where smoking is permitted outside.

Where special arrangements are required, i.e. diet, room location, the Hotel must be advised in writing. Whilst every effort will be made to meet these requests, they are not guaranteed and may be chargeable.

We love children at Bedruthan but parents need a break – so children under 7 are not allowed in the restaurant at dinner regardless of tariff paid. After dinner, parents can relax in peace too – all children under 13 must vacate the public lounges by 10.00 pm.

The chill box in your room is suitable to cool drinks but is not cool enough for safe food storage or ice making and it is for this reason we ask you not to bring perishable food and drinks with you.

Maintenance & Improvements

As the hotel is now open all year round, with the exception of a few days over Christmas, you may find that there is necessary maintenance, development or refurbishment work taking place during your visit. We will use all reasonable endeavours to keep any noise and inconvenience to a minimum.

Please help us to make your stay a happy one: if something goes wrong on your holiday please let us know before you leave so that we can try to put it right.

Liability

The Hotel shall not, except in respect of death or personal injury caused by the Hotel's negligence or in circumstances of fraud or fraudulent misrepresentation (or as otherwise provided for in these terms), be liable whether in tort, contract, misrepresentation or otherwise for any indirect, special or consequential loss, damage, costs, expenses or other claims (whether caused by the Hotel, its employees or agents or otherwise) which arise out of or in connection with the provision of the facilities and services under these terms. The Hotel's total liability in contract, tort, misrepresentation or otherwise arising in connection with the performance or contemplated performance of the services shall be limited to the price paid for those services.

All warranties, conditions and other terms implied by statute or common law are, to the fullest extent permitted by law, excluded from these terms.

Force Majeure

The Hotel will not be liable for any failure or delay in providing facilities or services as a result of events or matters outside its control, including (but not limited to) fire; explosion; storm; flood; Act of God, action by Government or a Governmental agency; shortage of goods or materials; strike or lock-out.

Cancellation Policy

Should you need to cancel, please notify the hotel in writing. For cancellations more than 28 days prior to arrival your deposit will be refunded less an administration charge of £20.00. For cancellations fewer than 28 days prior to arrival, your deposit will be forfeited. In the event that we are unable to re-sell the room/s a 75% charge of your total booking will apply. We strongly advise that you take out cancellation insurance to cover this.

Contagious Illness

For the protection of all guests, if we believe that anyone in your party is likely to have or is carrying a contagious illness we will not allow them or any other members of your party sharing the same room to use any part of the hotel premises except their room and the immediate route to it.

Bedruthan Steps Hotel & Spa

Mawgan Porth
Cornwall TR8 4BU

Telephone 01637 860555
Reservations 01637 860860
Fax 01637 860714
Spa 01637 861219

stay@bedruthan.com
www.bedruthan.com

2010 Tariff



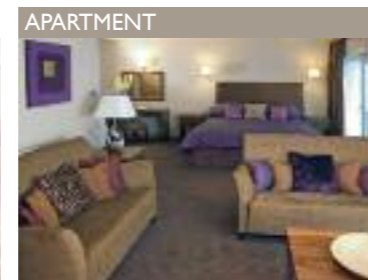
Bedruthan
STEPS @ HOTEL

Accommodation

All of our rooms are simple and contemporary to reflect the hotel architecture and beachside setting.

The majority of our bedrooms boast spectacular views over the Atlantic and with different sized rooms we have something suitable for all tastes and sizes of party. Our hotel rooms are perfect for a couple or families, villas are perfect for families to spread out and our large apartments are great for those wishing to spoil themselves or for that special occasion.

All rooms are en suite with a television, internet access, chill box, tea and coffee making facilities, a hairdryer and a baby listening monitor. Laundry facilities are located near to the villas and in the main hotel where irons and ironing boards are also available.



Apartments

Spacious family accommodation with sea views located in a separate building next to the main hotel. Each have a sitting area, one double bedded room and additional room/s for children, most are with bunk beds. Some have a ground floor terrace area.

Large Villa

A sea view double room with a separate children's bunk bedroom with space for an additional cot and/or an extra child's bed. These rooms have a ground floor terrace area at the front with access to the outdoor children's play areas. There are also two extra large villas with 2 sets of bunk beds ideal for families of 6.

Standard Villa

A sea view double room with children's bunk beds. These are partially divided by a low level shelving unit, a pull down blind and doors. These rooms also have a ground floor terrace at the front with access to the outdoor children's play areas.

Family Room

A sea view double room with two children's beds. These rooms on the first and second floors have a partial divider comprising of a low level shelving unit and a pull down blind. Some have additional space for a cot.

Interconnecting Room

A non sea view double room which interconnects with a non sea view twin room. Most rooms have

additional space for a cot and the larger inter-connecting rooms have space for a cot or an extra child's bed.

Cabin Room

A non sea view double room with a separate bunk bedroom within the main bedroom.

Double/Twin Room

Some with sea view and some without, these spacious rooms have en suite facilities and contemporary décor.

Single Room

All our single rooms have en suite facilities and overlook our tennis court, pools and countryside beyond.

Tariff 2010

| DAY | JAN | FEB | MAR | APR | MAY | JUN | JUL | AUG | SEP | OCT | NOV | DEC |
|-----|-----|-----|-----|-----|-----|-----|-----|-----|-----|-----|-----|-----|
| M | | | 1 | | | 1 | | | | | 1 | |
| T | | | 2 | | | 2 | | | | | 2 | |
| W | | | 3 | | | 3 | | | | | 3 | |
| T | | | 4 | 1 | | 4 | 1 | | 1 | | 4 | 2 |
| F | 1 | | 5 | 2 | | 5 | 2 | | 2 | | 5 | 3 |
| S | 2 | | 6 | 3 | 1 | 6 | 3 | | 3 | | 6 | 4 |
| S | 3 | | 7 | 4 | 2 | 7 | 4 | 1 | 4 | | 7 | 5 |
| M | 4 | 1 | 8 | 5 | 3 | 8 | 5 | 2 | 5 | | 8 | 6 |
| T | 5 | 2 | 9 | 6 | 4 | 9 | 6 | 3 | 6 | | 9 | 7 |
| W | 6 | 3 | 10 | 7 | 5 | 10 | 7 | 4 | 7 | | 10 | 8 |
| T | 7 | 4 | 11 | 8 | 6 | 11 | 8 | 5 | 8 | | 11 | 9 |
| F | 8 | 5 | 12 | 9 | 7 | 12 | 9 | 6 | 9 | | 12 | 10 |
| S | 9 | 6 | 13 | 10 | 8 | 13 | 10 | 7 | 10 | | 13 | 11 |
| S | 10 | 7 | 14 | 11 | 9 | 14 | 11 | 8 | 11 | | 14 | 12 |
| M | 11 | 8 | 15 | 12 | 10 | 15 | 12 | 9 | 12 | | 15 | 13 |
| T | 12 | 9 | 16 | 13 | 11 | 16 | 13 | 10 | 13 | | 16 | 14 |
| W | 13 | 10 | 17 | 14 | 12 | 17 | 14 | 11 | 14 | | 17 | 15 |
| T | 14 | 11 | 18 | 15 | 13 | 18 | 15 | 12 | 15 | | 18 | 16 |
| F | 15 | 12 | 19 | 16 | 14 | 19 | 16 | 13 | 16 | | 19 | 17 |
| S | 16 | 13 | 20 | 17 | 15 | 20 | 17 | 14 | 17 | | 20 | 18 |
| S | 17 | 14 | 21 | 18 | 16 | 21 | 18 | 15 | 18 | | 21 | 19 |
| M | 18 | 15 | 22 | 19 | 17 | 22 | 19 | 16 | 19 | | 22 | 20 |
| T | 19 | 16 | 23 | 20 | 18 | 23 | 20 | 17 | 20 | | 23 | 21 |
| W | 20 | 17 | 24 | 21 | 19 | 24 | 21 | 18 | 21 | | 24 | 22 |
| T | 21 | 18 | 25 | 22 | 20 | 25 | 22 | 19 | 22 | | 25 | 23 |
| F | 22 | 19 | 26 | 23 | 21 | 26 | 23 | 20 | 23 | | 26 | 24 |
| S | 23 | 20 | 27 | 24 | 22 | 27 | 24 | 21 | 24 | | 27 | 25 |
| S | 24 | 21 | 28 | 25 | 23 | 28 | 25 | 22 | 25 | | 28 | 26 |
| M | 25 | 22 | 29 | 26 | 24 | 29 | 26 | 23 | 26 | | 29 | 27 |
| T | 26 | 23 | 30 | 27 | 25 | 30 | 27 | 24 | 27 | | 30 | 28 |
| W | 27 | 24 | 31 | 28 | 26 | 31 | 28 | 25 | 28 | | 31 | 29 |
| T | 28 | 25 | | 29 | 27 | | 29 | 26 | 29 | | | 30 |
| F | 29 | 26 | | 30 | 28 | | 30 | 27 | 30 | | | 31 |
| S | 30 | 27 | | | 29 | | | 28 | | | | |
| S | 31 | 28 | | | 30 | | | 29 | | | | |
| M | | | | | 31 | | | 30 | | | | |
| T | | | | | | | | 31 | | | | |

- Festive rates apply
- High season
- Mid season
- Low season
- Closed

Tariff 2010

| MAIN TARIFF | LOW SEASON | MID SEASON | | HIGH SEASON | |
|-------------------|------------|------------|---------|-------------|---------|
| | | 1-3 days | 4+ days | 1-3 days | 4+ days |
| Non sea view room | 79 | 103 | 95 | 131 | 118 |
| Sea view room | 87 | 103 | 95 | 131 | 118 |
| Villas | 98 | 115 | 107 | 143 | 130 |
| Apartment | 100 | 117 | 109 | 145 | 132 |

There are also a number of budget rooms starting from £69 per person per night. Prices shown are £s per person per night based on dinner, bed and breakfast and inclusive of VAT. During school holidays most availability is for a minimum of 7 night stays and arrival days are Thursday, Friday and Sunday.

CHILDREN'S TARIFF

LOW/MID/HIGH SEASON

Where children share their parent's room (family rooms, cabin rooms, standard villas) the below rates apply:

| | |
|----------------|-------------------|
| Under 4 months | FREE |
| 4 - 11 months | £14 |
| 1 - 2 years | 25% of adult rate |
| 3 - 6 years | 50% of adult rate |
| 7 - 12 years | 67% of adult rate |

FREE CHILD OFFER - On 7 night stays, or stays of three nights or more between Sunday and Thursday*, your youngest child, aged 6 and under stays for free when sharing parent's room. This offer is valid 2nd January – 28th May and 1st September – 19th December 2010.

Valid on certain room types only. Subject to availability and cannot be taken in conjunction with any other offer. Not valid during October half term. *Please note that during the Easter Holiday period, the free child place is valid on 7 night stays only.

NON SEA VIEW INTERCONNECTING ROOMS

| | | |
|----------------|--------------|-------------------|
| Low/Mid Season | 0 – 6 years | 50% of adult rate |
| Low/Mid Season | 7 – 12 years | 67% of adult rate |
| High Season | 0 – 12 years | 75% of adult rate |

LARGE VILLAS & APARTMENTS

| | | |
|-------------|--------------|-------------------|
| All Seasons | 0 – 12 years | 75% of adult rate |
|-------------|--------------|-------------------|

Please note all rooms are subject to a minimum occupancy.